

# Westmount Estates



Castlewood Drive, London, SE9 1ND

**£1,900 PCM**

Nestled in the charming neighbourhood of Castlewood Drive, London, this delightful mid-terrace house offers a perfect blend of comfort and character. Built in 1930, the property boasts a generous living space of 947 square feet, making it an ideal home for families or professionals seeking a tranquil yet convenient lifestyle.

Upon entering, you are greeted by two inviting reception rooms, perfect for entertaining guests or enjoying quiet evenings with family. The layout provides a warm and welcoming atmosphere, allowing for versatile use of space. The three well-proportioned bedrooms offer ample room for relaxation and rest, catering to the needs of a growing family or those who desire extra space for guests or a home office.

The house is situated in a desirable location, with easy access to local amenities, schools, and transport links, making it a practical choice for those commuting to central London or exploring the surrounding areas.

Don't miss the chance to make this lovely property yours.



**ENTRANCE**



**KITCHEN**



**ENTRANCE HALL**

**LIVING ROOM**



**STAIRS AND LANDING**

**BEDROOM ONE**



**DINING ROOM**



**BEDROOM TWO**



**BEDROOM THREE**



**BATHROOM**



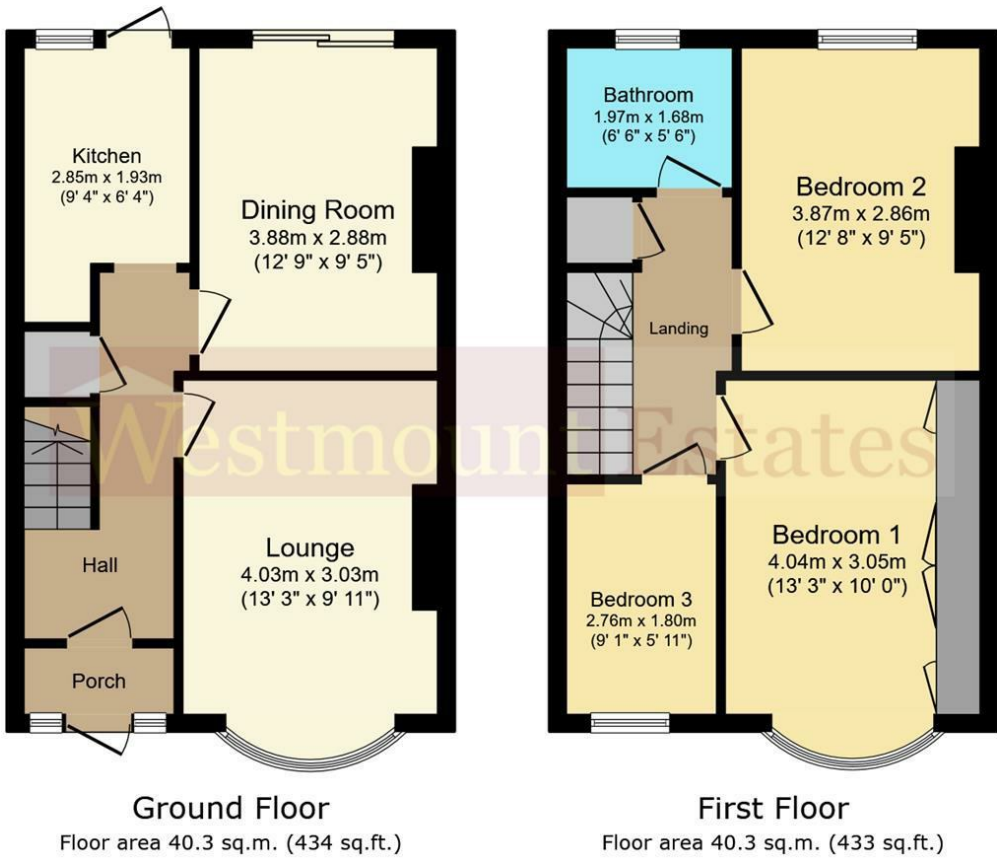
**REAR GARDEN**



**FRONTAGE**

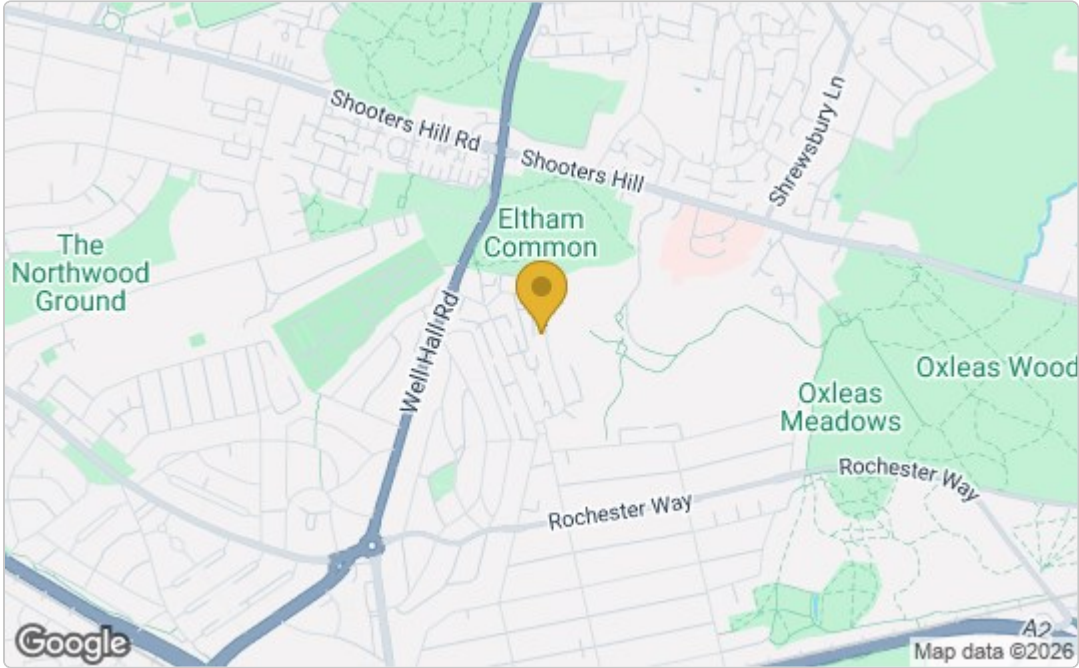


Floor Plan

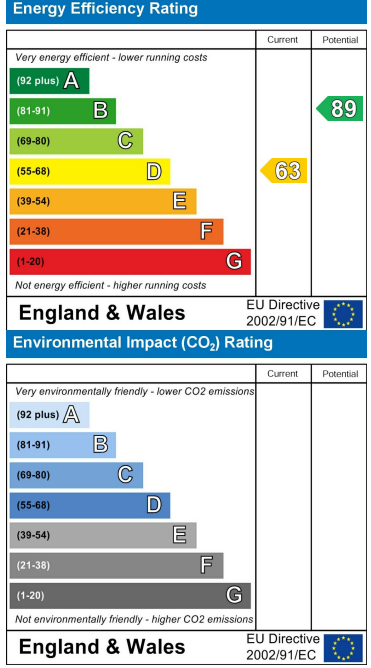


This floor plan is for illustrative purposes only. It is not drawn to scale. Any measurements, floor areas (including any total floor area), openings and orientations are approximate. No details are guaranteed, they cannot be relied upon for any purpose and do not form any part of any agreement. No liability is taken for any error, omission or misstatement. A party must rely upon its own inspection(s). Powered by [www.Propertybox.io](http://www.Propertybox.io)

Area Map



Energy Efficiency Graph



These particulars, whilst believed to be accurate are set out as a general outline only for guidance and do not constitute any part of an offer or contract. Intending purchasers should not rely on them as statements of representation of fact, but must satisfy themselves by inspection or otherwise as to their accuracy. No person in this firms employment has the authority to make or give any representation or warranty in respect of the property.